

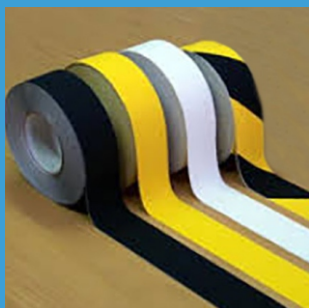
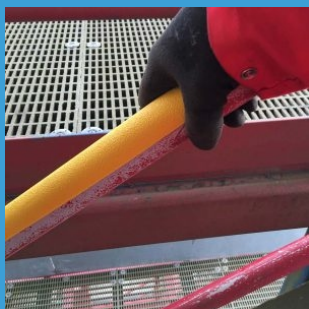
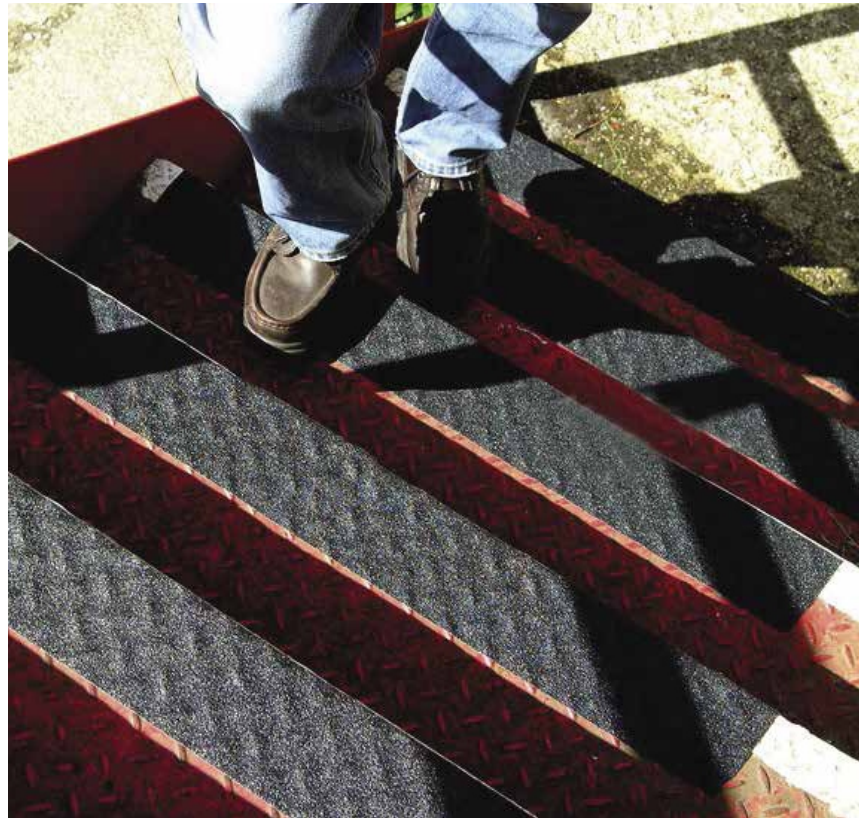


Typical Applications

- Durbar or Checker Plate
- Uneven or Angled Surfaces
- Handrails
- Machinery and Equipment
- Steps and Walkways

Benefits

- Standard Colours
- Excellent High Traction
- Indoor and Outdoor Use
- Prevents Slips, Trips and Falls
- Quick and Easy Installation



Seaward Safety's Anti-slip Conformable Tapes are manufactured using a soft aluminium self-adhesive foil backing, with a top coating of aluminium oxide grit. These hard-wearing materials provide durability and longevity on both internal and external applications within a temperature range of -30°C to +60°C.

Our coarse grade Anti-slip Conformable Tapes are suitable for both shaped and uneven surfaces, and allows for flexures of >90 degree angles. The malleable tape adopts the texture and shape of the surface and, due to the foil substrate material, will not lift or rise off.

Typically supplied in rolls, we offer a range of standard sizes and colours.

Standard Roll Sizes

Metric	Imperial
25mm x 18.3m	1" x 60'
50mm x 18.3m	2" x 60'
100mm x 18.3m	4" x 60'

Colours

