

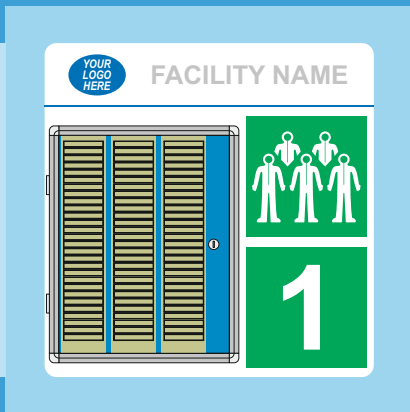
T-Card Boards



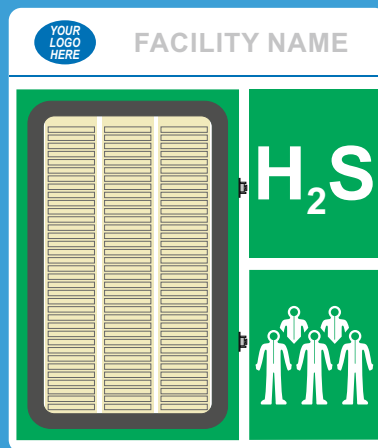
Seaward Safety's T-Card Boards have many different uses; muster stations/points, emergency response teams, work permits, fire stations, on site personnel, lifeboat assembly, cabin assignment etc. We offer 3 different types of cabinet, depending on it's intended location. Each board is supplied with enough T-cards to suit the capacity of the cabinet.

Cabinet Options

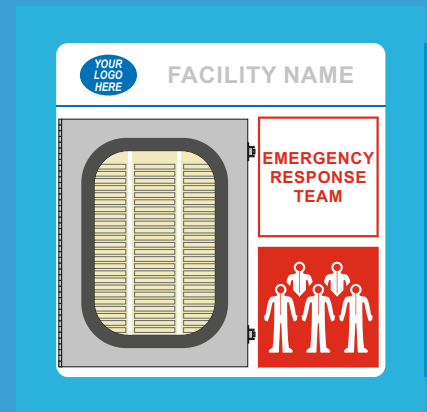
- Internal - durable, aluminium cabinet with UV resistant window. Ideal for internal uses e.g. muster areas. This cabinet can hold 78 T-cards.
- External - a robust, 316 stainless steel cabinet, with a UV resistant window. Ideal for external uses e.g. lifeboat stations. This cabinet can hold 87 T-cards.
- Fibreglass - a fire-retardant cabinet with a UV resistant window. The colour of the cabinet can be modified to suit its intended use e.g. red for fire teams. Ideal for internal and external uses. This cabinet can hold 105 T-cards.



Internal Cabinet



Fibreglass Cabinet



External Cabinet

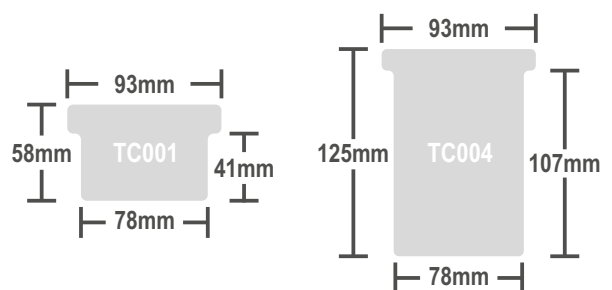
* The pictographs on the right hand side of the boards are optional. We have a range of alternative pictographs to accommodate your requirements.

T-Card options

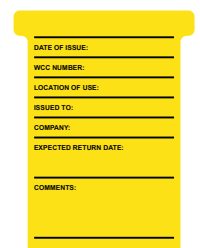
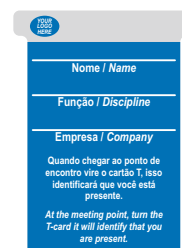
Each board is supplied with T-cards which are available in a variety of options:

- Different colours.
- With or without a company logo and/or text.
- Double sided - with contrasting colour/information/language on either side.
- Dual/ multiple language
- Dry wipe - to enable writing on the cards, which can be removed re-used.

T-card Sizes:



Example T-cards:



Examples of some of our T-Card Boards

